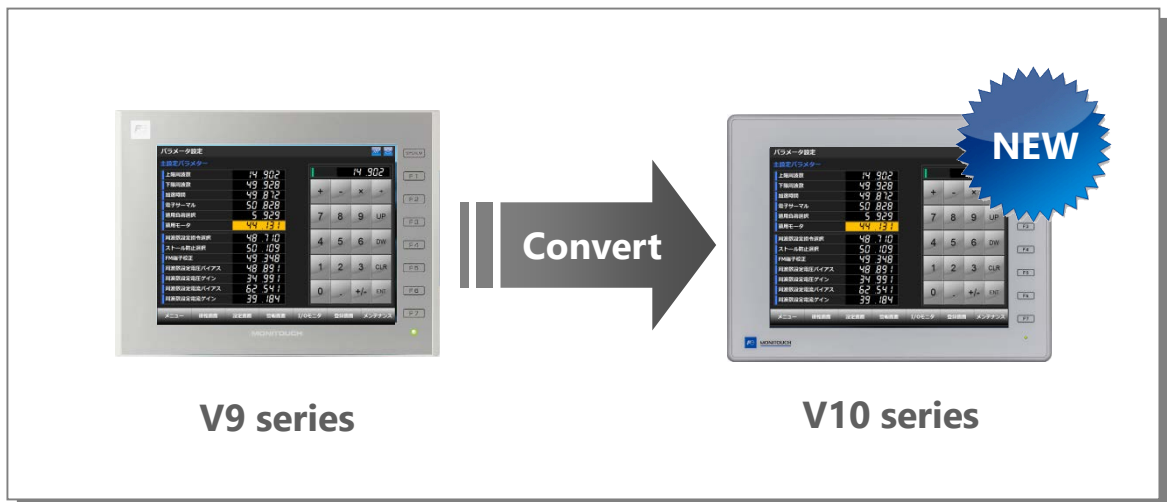


MONITOUCH

V10 Replacement Guidance [V9 series]



[- List of Recommended Replacement Models](#) [Page 2](#)

[- Configuration Software](#) [Page 5](#)

[- Screen Program Conversion](#) [Page 5](#)

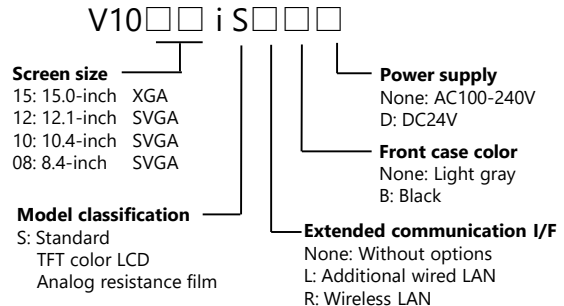
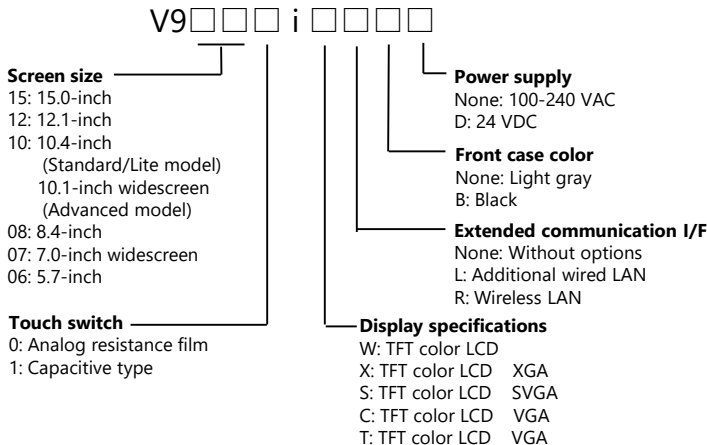
List of Recommended Replacement Models

Following is a list of V10 replacement models for V9 series. Please check the model of V9 unit in use and select the recommended replacement model.

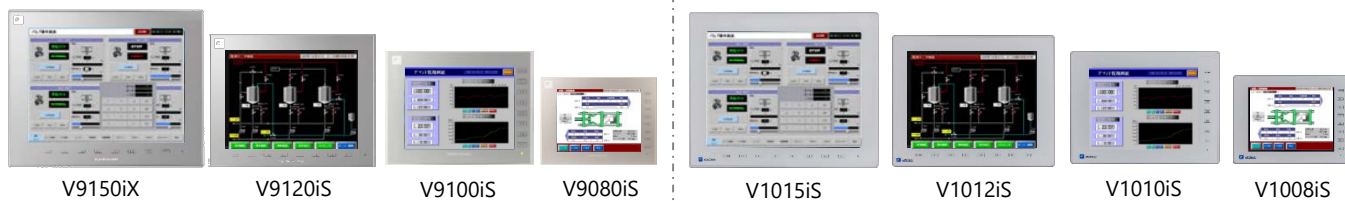
Model classification	Size	V9 model		V10 model		Refer to
		Light Gray	Black	Light Gray	Black	
V9 Advanced	10.1-inch widescreen	V910xiWRLD	-	There are no widescreen models in the V10 series. Continue to use the V9 Advanced model.		-
		V910xiWLD	-			
	7.0-inch widescreen	V907xiWRLD	-			
		V907xiWLD	-			
V9 Standard	15.0-inch	V9150iX	-	V1015iS	V1015iSB	Page 3
		V9150iXD	-	V1015iSD	V1015iSBD	
		V9150iXLD	-	V1015iSLD	V1015iSLBD	
		V9150iXRD	-	V1015iSRD	V1015iSRBD	
	12.1-inch	V9120iS	V9120iSB	V1012iS	V1012iSB	
		V9120iSD	V9120iSBD	V1012iSD	V1012iSBD	
		V9120iSLD	V9120iSLBD	V1012iSLD	V1012iSLBD	
		V9120iSRD	V9120iSRBD	V1012iSRD	V1012iSRBD	
	10.4-inch	V9100iS	V9100iSB	V1010iS	V1010iSB	
		V9100iSD	V9100iSBD	V1010iSD	V1010iSBD	
		V9100iSLD	V9100iSLBD	V1010iSLD	V1010iSLBD	
		V9100iSRD	V9100iSRBD	V1010iSRD	V1010iSRBD	
	8.4-inch	V9080iSD	V9080iSBD	V1008iSD	V1008iSBD	
		V9080iSLD	V9080iSLBD	V1008iSLD	V1008iSLBD	
		V9080iSRD	V9080iSRBD	V1008iSRD	V1008iSRBD	
	V9 Lite	10.4-inch	V9100iC	V9100iCB	There are no Lite models in the V10 series. If replaced with V10, the resolution will change from VGA to SVGA. If the same resolution model is required, continue to use the V9 Lite model.	
V9100iCD			V9100iCBD			
8.4-inch		V9080iCD	V9080iCBD			
5.7-inch		V9060iTD	V9060iTBD			

* Models with few restrictions on use are described above list of recommended replacement models. It is also possible to replace V9 with V10 other than the recommended model. Select the model according to your system.

Model Description



- V9 Standard → V10 Standard



Hardware Specifications

Item		V9 Standard	V10 Standard
Dimensions W x H x D (mm)	15.0-inch	382.8 x 312.8 x 80.8	382.8 x 312.8 x 79.2
	12.1-inch	327.8 x 261.0 x 54.9	327.8 x 261.0 x 53.4
	10.4-inch	303.8 x 231.0 x 54.0	303.8 x 231.0 x 53.8
	8.4-inch	235.0 x 180.0 x 48.9	235.0 x 180.0 x 48.7
Panel cut-out W x H (mm)	15.0-inch	369.4(+0.5/-0) x 299.4(+0.5/-0)	Same as on the left
	12.1-inch	313.0(+0.5/-0) x 246.2(+0.5/-0)	
	10.4-inch	289.0(+0.5/-0) x 216.2(+0.5/-0)	
	8.4-inch	220.5(+0.5/-0) x 165.5(+0.5/-0)	
Display device		TFT color	Same as on the left
Display colors		16.7 million colors *1	Same as on the left
Resolution	15.0-inch	1024 x 768 dots	Same as on the left
	12.1/10.4/8.4-inch	800 x 600 dots	Same as on the left
Touch switch		Analog resistance film	Same as on the left
Communication I/F	Serial	D-Sub 9-pin x1 : RS-232C / RS-422/485 Modular 8-pin x2 : RS-232C / RS-485	Same as on the left
	USB	USB-A x1, USB mini-B x1	Same as on the left
	Ethernet	LAN x1 : Standard equipment LAN2 x1 : Optional equipment *2	Same as on the left *2
	Wireless LAN	WLAN x1 : Optional equipment *2	Same as on the left *2
	Network	Communication unit: CUR-xx	Same as on the left
Audio output		Standard equipment	Same as on the left
Video/RGB		Optional unit GUR-00 - 02, GUR-04, GUR-10 - 11	Under development Scheduled to be released in April 2024.
External storage device		SD/SDHC card USB flash drive	SD/SDHC/ SDXC card USB flash drive

*1 Only for displaying "picture" images, 3D parts, video / RGB input images and remote desktop window. All other content is displayed using 65,536 colors.

*2 LAN2 is supported only for models with "L" in the model number. Wireless LAN is supported only for models with "R" in the model number.

- V9 Lite → V10 Standard

The screen resolution differs between V9 Lite and V10 Standard.

When converting the screen program from V9 Lite to V10 Standard, use automatic resizing feature of V-SFT. If the layout is changed, adjust it manually.

V10 does not offer the 5.7-inch model. When replacing V9060iTD with V10, enlarge the panel cut-out.

Recommended Replacement Models

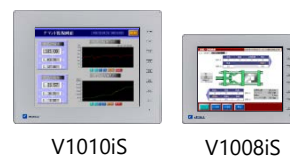
Model classification	Size	V9 model		V10 model	
		Light Gray	Black	Light Gray	Black
V9 Lite	10.4-inch	V9100iC	V9100iCB	V1010iS	V1010iSB
		V9100iCD	V9100iCBD	V1010iSD	V1010iSBD
	8.4-inch	V9080iCD	V9080iCBD	V1008iSD	V1008iSBD
	5.7-inch	V9060iTD	V9060iTBD	Not available Select from above.	



V9100iC

V9080iC

V9060iT



V1010iS

V1008iS

Hardware Specifications

Item		V9 Lite	V10 Standard
Dimensions W x H x D (mm)	10.4-inch	303.8 x 231.0 x 54.0	303.8 x 231.0 x 53.8
	8.4-inch	235.0 x 180.0 x 48.9	235.0 x 180.0 x 48.7
	5.7-inch	182.5 x 138.8 x 53.0	Not available *4
Panel cut-out W x H (mm)	10.4-inch	289.0(+0.5/-0) x 216.2(+0.5/-0)	Same as on the left
	8.4-inch	220.5(+0.5/-0) x 165.5(+0.5/-0)	Same as on the left
	5.7-inch	174.0(+0.5/-0) x 131.0(+0.5/-0)	Not available *4
Display device		TFT color	Same as on the left
Display colors		16.7 million colors *1, 262 thousand colors *1	16.7 million colors *1
Resolution		640 x 480 dots	800 x 600 dots *5
Touch switch		Analog resistance film	Same as on the left
Communi- cation I/F	Serial 10.4/8.4- inch	D-Sub 9-pin x1 : RS-232C / RS-422/485 Modular 8-pin x2 : RS-232C / RS-485	Same as on the left
	Serial 5.7-inch	D-Sub 9-pin x1 *2 : RS-232C / RS-422/485 Modular 8-pin x2 : RS-232C / RS-422/485 *3	D-Sub 9-pin x1 : RS-232C / RS-422/485 Modular 8-pin x2 : RS-232C / RS-485 *3
	USB	USB-A x1, USB mini-B x1	Same as on the left
	Ethernet	LAN x1 : Standard equipment	LAN x1 : Standard equipment LAN2 x1 : Optional equipment *6
	Network	Communication unit: CUR-xx	Same as on the left
External storage device		SD/SDHC card USB flash drive	SD/SDHC/ SDXC card USB flash drive

*1 Only for displaying "picture" images, 3D parts and remote desktop window. All other content is displayed using 65,536 colors.

*2 Supported only when using optional unit "DUR-00" when using 5.7-inch model.

*3 Only MJ2 of the 5.7 inch model supports RS-422. MJ2 of V10 does not support the RS-422 communication. Change to the RS-422 connection with CN1.

*4 V10 does not offer the 5.7-inch model. When replacing with V10, enlarge the panel cut-out.

*5 The resolution is SVGA. When converting the screen program, use automatic resizing feature. If the layout is changed, adjust it manually.

*6 LAN2 is supported only for models with "L" in the model number.

- Configuration Software

Use the configuration software V-SFT-6 for V10 and V9.

Model	Software	OS	Transferring cable ^{*1}
V9	V-SFT-6	Windows Vista (32bit, 64bit) Windows 7 (32bit, 64bit) Windows 8 (32bit, 64bit) Windows 8.1 (32bit, 64bit) Windows 10 (32bit, 64bit) Windows 11(64bit)	- USB cable (USB mini-B to USB-A)
V10	V-SFT-6 Supported with version 6.2.0.0 or later	Windows Vista (32bit, 64bit) Windows 7 (32bit, 64bit) Windows 8 (32bit, 64bit) Windows 8.1 (32bit, 64bit) Windows 10 (32bit, 64bit) Windows 11(64bit)	- LAN cable ^{*2} - V-CP (MJ to Dsub9) manufactured by Hakko Electronics Co., Ltd.

*1 The screen program can be transferred via SD card/USB flash drive.

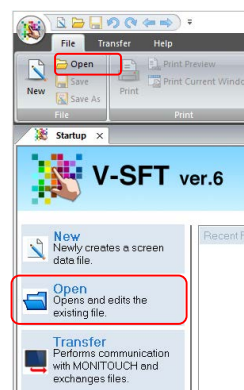
*2 LAN connector of V10/V9 supports Auto-MDIX. Straight/crossover cables can be used with or without HUB.

- Screen Program Conversion

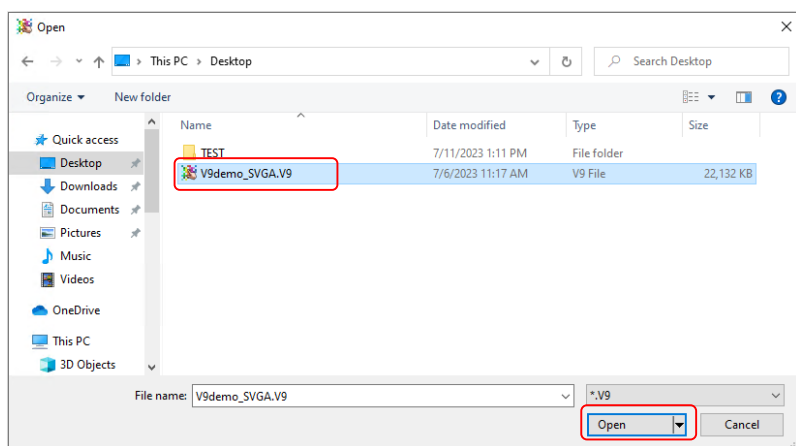
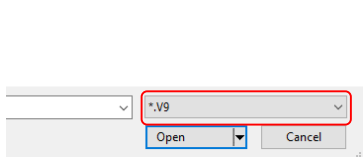
The screen program can be converted from V9 to V10 using V-SFT-6 (configuration software for V series).

- Conversion procedures

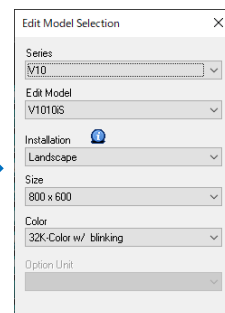
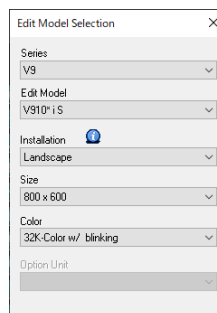
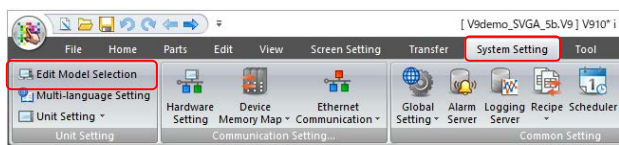
1. Start V-SFT and click [Open] in the Startup menu or [Open] in the [File] menu. The screen program file can also be opened by dragging it onto V-SFT-6. If using this method, proceed to step 4.
2. Change the file extension to [*.V9] in the [Open] dialog.



3. Select the V9 series screen program file and click [Open]. The V9 series screen program is opened.



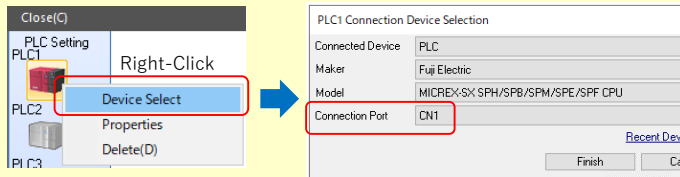
4. Click [System Setting] → [Edit Model Selection].



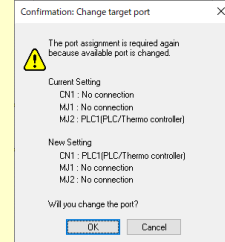
5. Select the V10 series model and click [OK].

When connecting RS-422 (4-wire system) to MJ2 of V906

MJ2 of the V10 series unit does not support RS-422 (4-wire system) connection. Change [Connection Port] to [CN1] in [System Setting] → [Hardware Setting] → [Connection Device Selection].

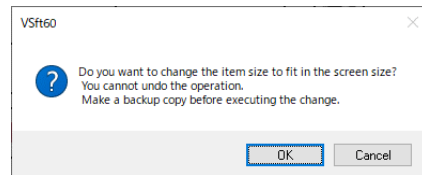


When using the PLC model with a fixed MJ2 connection (RS-422/4-wire system), [Confirmation: Change target port] is displayed. Click [OK] and the port will be change automatically.



- 6. When converting the program with different resolution, the dialog shown to the right will appear.

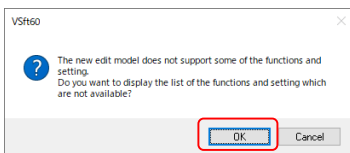
When enlarging parts: Click [Yes]
When not enlarging parts: Click [No]



- 7. The following dialog may be displayed.

Click [Yes] to display the error check window and check the functions and setting which are not available. Check [solution] and modify it.

If the same warning message appears even in the V9 screen program before conversion, the warning does not affect the program and you can use it without modification.



Category	Location	Normal	Overlap	Explanation	Solution
Warning	Overlap Library[7]	Normal	Overlap	Overlap larger than the screen is created.	Set the overlap
Warning	Overlap Library[8]	Normal	Overlap	Overlap larger than the screen is created.	Set the overlap

- 8. The screen program converted to V10 series is displayed on V-SFT. Name and save the file.



The converted V10 screen program cannot be converted back to the V9 screen program. Confirm the operation with the V10 series unit before use.